

FIPS End Gas Valve

Specifications and Dimensions

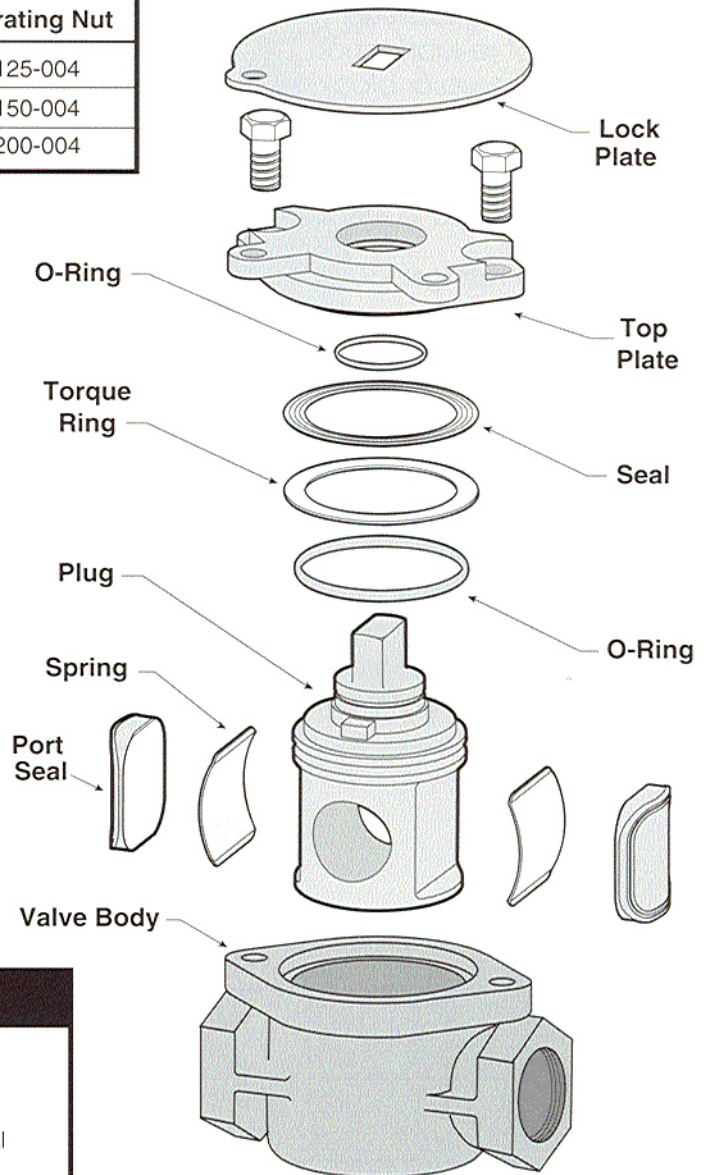
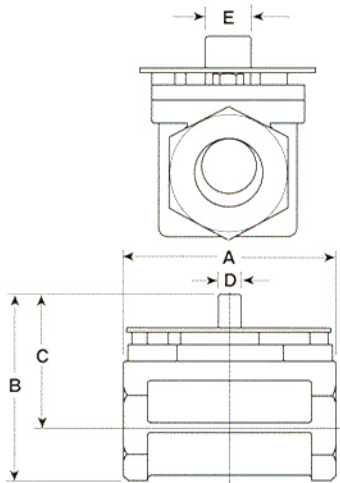
The extended view of the Style 350 "ULTRASEAL" FIPS end valve below indicates the relative position of operating parts with the valve in the closed position.

PART NUMBERS

Size	Basic Valve	With Lock Plate	With Lock Plate & 2" Operating Nut
1-1/4"	0350-1125-001	0350-1125-003	0350-1125-004
1-1/2"	0350-1150-001	0350-1150-003	0350-1150-004
2"	0350-1200-001	0350-1200-003	0350-1200-004

DIMENSIONS

Size	A	B	C	D	E
1-1/4"	4-5/8"	4-1/2"	3-1/4"	7/16"	7/8"
1-1/2"	4-5/8"	4-1/2"	3-1/4"	7/16"	7/8"
2"	6"	5-5/8"	3-15/16"	5/8"	1-1/4"



Materials of Construction

Body & Top Plate: Ductile Iron, ASTM A 536 GR 65-45-12
Plug: Ductile Iron, ASTM A 536 GR 65-45-12
"O" Ring Seals: SBR - Especially compounded for long life in natural gas service.
Metallic Atmospheric Seal: 18-8 Stainless Steel
Springs: Stainless Spring Steel
Cap Screws: Steel, ASTM A193 Grade B5
Torque Ring: Polyurethane
Port Seals: SBR Rubber Molded over High Tensile Strength Steel
Weather Seal: Chloroprene Rubber
Lock Plate: Carbon Steel